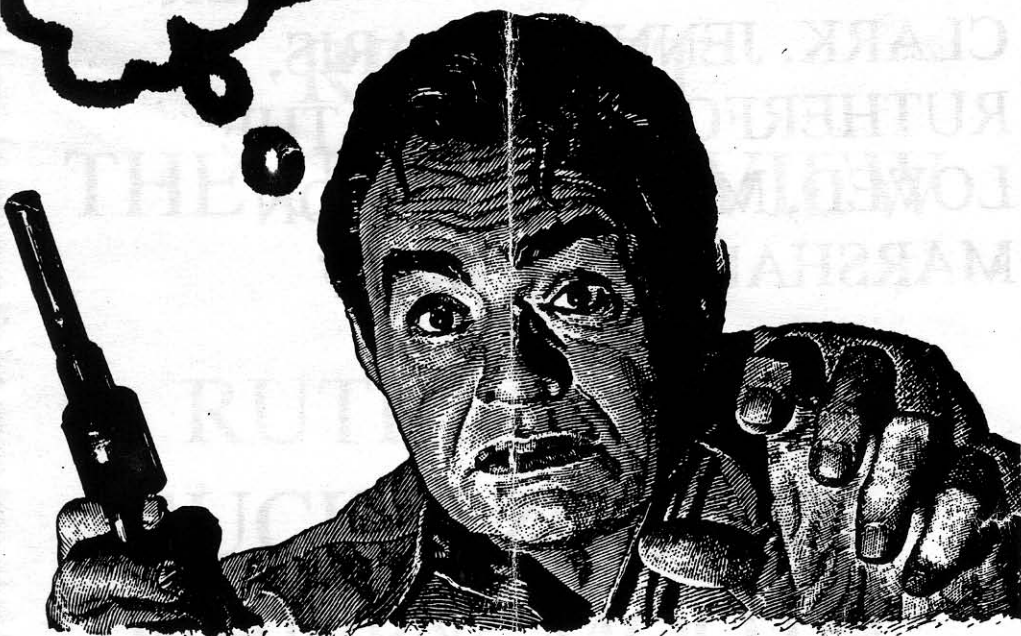


# the Dragonfly

**MCAFFEE  
THE LOVED**

**FREE**



**Issue # 3**

THE DRAGONFLY WOULD  
LIKE TO THANK THE  
FOLLOWING PEOPLE FOR  
THEIR HELP:

NOISE POLLUTION, NATURE'S  
GENERAL STORE, APPLE  
ANNIE'S MARKET, HEATHER  
CLARK, JENNIFER PARIS,  
RUTHERFORD SUCKS, THE  
LOVED, MCAFEE, DILLON  
MARSHALL, PHIL ROOF

MIT-  
LO  
BA  
VO  
TH  
DR  
TH  
TABLE OF  
CONTENTS

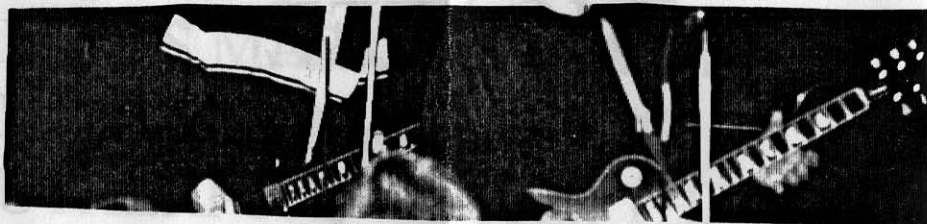
THE LOVED  
MCAFFEE  
RESPECT

THE UNINTERVIEW  
WITH  
RUTHERFORD  
SUCKS/ ZOLTAN  
WHIPPYSMOOTH

"WE'RE NOT CREATIVE" -TIM



"WE TRY TO GO FOR THAT ROCK'N'ROLL THING, BUT IT JUST COMES OUT DIFFERENT." - CORY



"I'D LIKE TO SEE MORE BANDS LIKE 'THE LOVED'"  
-COREY MCAFEE

**MCAFEE**

## MCAFEE

RECENTLY A NEW BAND HAS POPPED UP ON THE LOUISVILLE MUSIC SCENE IT'S NAME ; MCAFEE. THE BAND CONSISTS OF COREY M.- GUITAR, COREY- GUITAR & VOCALS, JOSH- DRUMS, & TIM- BASS & VOCALS. LATELY THIS BAND HAS BEEN TURNING LOTS OF HEADS AND THE DRAGONFLY WAS JUST ONE OF THEM, SO HERE'S WHAT THEY HAD TO SAY.

D.F.: HOW LONG HAVE YOU BEEN TOGETHER

C.M.: THE THREE OF US, TIM, ME, & HIM [CORY] HAVE BEEN TOGETHER SINCE LAST APRIL. HE [JOSH] CAME IN IN DECEMBER.

T: IT WAS OCTOBER.

-NOT TO SURE BUT THEY ALL AGREE THAT IT WAS SOMETIME IN THE FALL.

D.F.: WHAT ARE SOME OF YOUR MUSICAL INFLUENCES

C.M.: AC/DC, SUPERCHUNK

C: I THINK WE TRY TO PLAY 70'S ROCK BUT IT COMES OUT JUST LIKE...

J: WE TRIED TO PLAY DELTA 72 STUFF FOR A LONG TIME BUT WE'RE NOT THAT GOOD SO IT CAME OUT SOUNDING COMPLETELY DIFFERENT.

-AS FAR AS OTHER BANDS THEY LISTEN TO ; DELTA 72, JOHN SPENCER, ROCKET FROM THE CRYPT, GANG OF FOUR, THE STOOGES, THE KINKS, & J CHURCH.

J: MORE ROCK'N'ROLL THAN PUNK IF WE HAD OUR WAY IS WHAT WE WOULD TRY TO GO FOR.

C: WE TRY TO GO FOR THE R'N'R THING BUT IT JUST COMES OUT DIFFERENT.

D.F.: HOW MANY SHOWS HAVE YOU PLAYED

J: WE'VE PLAYED 2 SHOWS AND 2 PARTIES.

ONE SHOW WAS REALLY GOOD, ONE WAS all right.

ONE PARTY SUCKED, ONE WAS REALLY GOOD.

D.F.: WHAT DO YOU THINK OF THE LOUISVILLE MUSIC SCENE

C: WE DON'T KNOW WHERE WE FIT , I DON'T THINK.

J: WE PLAYED WITH THE ENKINDLES BEFORE FOR THE ALL AGES CROWD, AND WE'VE PLAYED PARTIES WITH KEGS AND SHIT.

C.M.: IT'S WEIRD PLAYING WITH HARD-CORE BANDS WHEN WE'RE A R'N'R BAND.

J: THE VEGGIE VAULT WAS WEIRD BECAUSE IT WAS LIKE BY THE GRACE OF GOD, ONSLAUGHT, SAMSON, AND THEN US, HEY NEAT A GUITAR SOLO! BUT WE LIKE PLAYING WITH THOSE KIDS THEIR FUN TO PLAY WITH.

T: WHO EVER WATCHES WE'LL PRETTY MUCH PLAY FOR.

C.M.: I'D LIKE TO SEE MORE BANDS LIKE 'THE LOVED'

D.F.: WHY DID YOU DECIDE MCAFFEE AS THE NAME

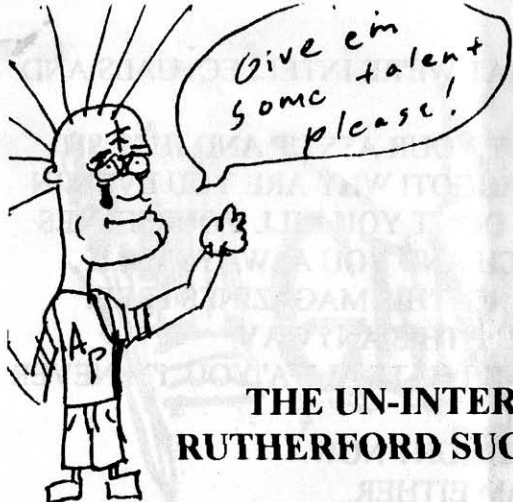
T: WE'RE NOT CREATIVE

C.M.: TIM & CORY WERE IN CASTNER. WHEN THEY FIRST STARTED PLAYING THEY HAD CASTNER PRACTICE, AND THEY CALLED THIS MCAFFEE PRACTICE. I WASN'T FOR IT IN THE BEGINNING.

D.F.: DO YOU HAVE ANY LAST COMMENTS

C: WE DON'T REALLY KNOW MUCH, WE'RE JUST REAL SIMPLE ABOUT IT, WE JUST PLAY MUSIC AND HAVE FUN, AND DON'T REALLY CARE ABOUT ANYTHING ELSE.

WELL FAITHFUL READERS THAT'S IT, NOW YOU CAN TELL EVERYBODY YOU HAVE THE SCOOP ON ONE OF LOUISVILLE'S UP AND COMING BANDS. MAKE SURE YOU CHECK THEM OUT AT ONE OF THEIR FUTURE SHOWS, AND LOOK FOR A RECORDING SOMETIME IN THE FUTURE.



## THE UN-INTERVIEW WITH RUTHERFORD SUCKS OR ZOLTAN

D.F.: RUTHERFORD SUCKS.

R.S.: WELL YOU KNOW WHAT?..... YOU SUCK!!

ERIC: WILL COREY MCAFEE BE MAKING AN APPEARANCE  
IN THIS ISSUE.

FRED: COREY MACAFEE IS A REAL NICE CHARACTER.

ERIC: HE IS THE GREATEST!

D.F.: WOULD YOU LIKE TO TELL US YOUR NAMES AND  
WHAT INSTRUMENTS YOU PLAY.

FRED: NO.

ERIC: MY NAME IS FRED AND I PLAY DRUMS.

ALEX: I'M THE SHORT KID AND I DON'T PLAY BASS.

AARON: I AM AARON AND I DON'T SING VERY WELL.

SEAN A.: I ALSO PLAY GUITAR

JOHN MCCOSKEY:(wearing Tom McMahan's glasses) I AM TOM  
AND I AM COOL.

D.F.: WHY DO YOU CALL YOURSELVES "THE BEST BAND  
YOU'VE NEVER HEARD."?

ALEX: BECAUSE NO ONE'S EVER HEARD US.

ERIC: CAN I CHANGE MY ANSWER FOR THE FIRST  
QUESTION?

D.F. IF YOU MUST.

ERIC: THANKS. MY NAME IS MR. THE BEARD AND I DON'T  
HAVE A BEARD ANY MORE. I PLAY THE DRUMS. ISN'T  
THAT FUNNY?

D.F.: NO.

FRED: I THINK IT IS THE FUNNIEST THING EVER.

ALEX: I TAKE THAT BACK. IN REAL LIFE, I'M ACTUALLY  
VERY TALL.

ERIC: I LIKE TO THINK THAT WE'RE INTELLECTUALS AND NOT JUST MUSICIANS.

D.F.: WHY DON'T YOU SHUT YOUR ASS UP AND JUST SIT THERE AND BE PRETTY FAGGOT! WHY ARE YOU EVEN IN THE BAND! IN FACT, WHY DON'T YOU KILL YOURSELVES RIGHT NOW! YOU ALL SUCK AND YOU ALWAYS WILL.

FRED: LOOK WHO'S TALKING. THIS MAGAZINES FREE.

AARON: I DIDN'T WANNA DO THIS ANYWAY.

ERIC: I HATE CURSIVE AND I HATE ALL A' YOU. I'M NEVER COMING BACK TO SCHOOL.

ALEX: I'M NOT EVEN HERE RIGHT NOW.

AARON: I DON'T THINK I AM EITHER.

SEAN A.: WHY AM I NOT HERE FOR THIS SHITTY INTERVIEW?

FRED: JUST SHUT UP AND DO WHAT YOUR TOLD.

ERIC: I KNOW. YOU'RE NOT EVEN REALLY HERE.

SEAN S.: THAT LAST SONG GAVE ME CHILLS.

TOM M.: I LOVE YOU GUYS. YOU'RE BETTER THAN THE ENKINDLES.

ERIC: KILL ME NOW.

SEAN A.: WHEN ARE WE GOING TO PRACTICE.

AARON: LET'S PRACTICE FRIDAY.

D.F.: WE'RE LEAVING. IN ACTUALITY YOU REALLY DO SUCK.

ERIC: ACT (fluoride) IS GOOD AND HOCUS POCUS IS BAD. PLEASE DON'T LIGHT THE BLACK FLAME CANDLE. OH PLEASE MAX, I'M NOT KIDDING THIS TIME.

D.F.: BYE.

R.S.: GOOD RIDDANCE. WE'LL CALL YOU. I CAN'T BELIEVE YOU READ THIS I GUESS THIS MEANS THAT YOU SUCK TOO. WHAT A WASTE OF PAPER.







# NATURE'S GENERAL STORE

HERBS • SUPPLEMENTS • BULK

*Complete Line of Bulk Herbs*

**OPEN 6 DAYS A WEEK**

*Skin Care Products • Enzymatic Therapy • Gaic Herbs • Barleans Organic Oil*

*Thermogenics • Weight Loss Program* "3 Caps A Day Burn The Fat Away"

360 New Albany Plaza (located in The New Albany Plaza)

(812) 945-8650

**WE CARRY HERBAL PHEN-FEN**

**COME VISIT OUR NEW TANNING  
BOOTHS**

**OPEN MON-SAT 10-7**

## THE LOVED

THE LOUISVILLE MUSIC SCENE HAS ALWAYS HAD A VERY DIVERSE SOUND. THERE HAS LATELY BEEN A MOVEMENT OF BOTH HARD-CORE AND ROCK'N' ROLL BANDS. AT THE HEART OF THE ROCK TYPE MOVEMENT IS ONE VERY TALENTED BAND KNOWN AS THE LOVED. THEY ARE THREE UNIQUE INDIVIDUALS THAT WE HAD A CHANCE TO INTERVIEW AND THIS IS WHAT THEY HAD TO SAY.

D.F.: WHAT IS YOUR NAME AND WHAT DO YOU DO IN THE BAND.

J: JOEY, I PLAY DRUMS

M: MICHAEL, GUITAR & VOCALS.

B: BENNY, BASS

D.F.: WHEN IS YOUR RECORD COMING OUT.

B: SOON, WHEN WE GET THE LAYOUT DONE.

D.F.: DO YOU HAVE PLANS FOR A TOUR.

M: IF WE GET ASKED TO TOUR WE'D LIKE TO TOUR.

B: HOPEFULLY, MAYBE

D.F.: WHAT INSPIRES THE STYLE OF MUSIC YOU GUYS HAVE.

B: I LIKE ROCK'N'ROLL, IT IS DIFFERENT FROM WHAT I WAS DOING BEFORE.

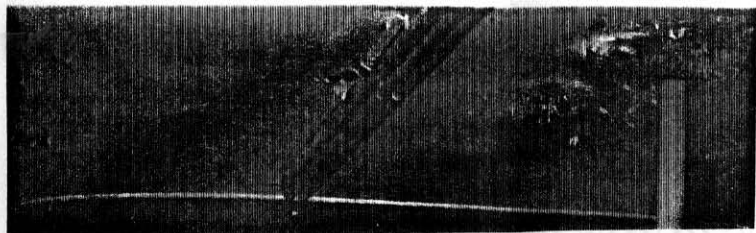
M: WE SORT OF WROTE THE SONGS, AND THAT'S WHAT THEY SOUNDED LIKE, WE JUST DIDN'T DECIDE TO PLAY THAT TYPE OF MUSIC.

D.F.: WHAT WOULD YOU CONSIDER THE STYLE OF MUSIC.

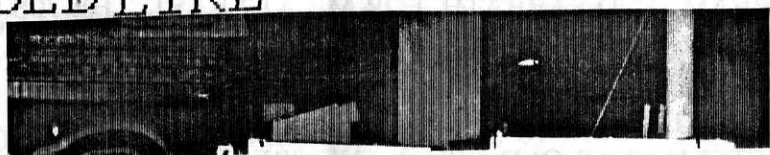
B: ROCK, JUST LISTEN TO IT AND INTERPRET IT THE WAY YOU WANT.

D.F.: SO, WHAT INSPIRES THE SONGS THAT YOU WRITE.

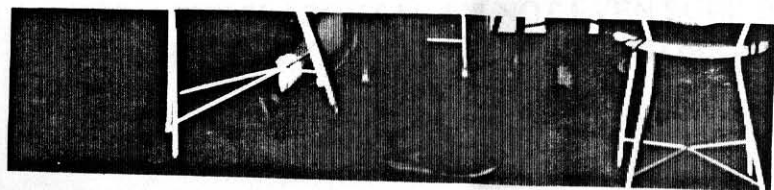
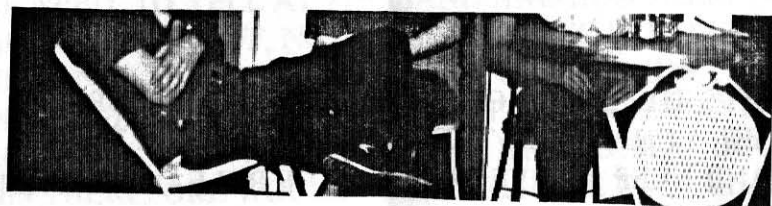
B: ROCK



" WE SORT OF WROTE THE SONGS AND THAT'S WHAT THEY SOUNDED LIKE " -MICHAEL



"JUST LISTEN TO INTERPRET IT THE WAY YOU WANT" -BENNY



M: DIFFERENT THINGS, IT'S NOT LIKE I THINK OF THIS AND GO WRITE A SONG, IT JUST COMES OUT.

D.F.: WHAT DO YOU THINK OF THE LOUISVILLE SCENE AND HOW IT'S CHANGED IN THE LAST YEARS.

B: IT'S MORE ROCK.

J: YOU'RE GOING TO HAVE TO ASK QUESTIONS THAT HE CAN NOT ANSWER WITH ROCK.

M: I WOULD DEFINITELY AGREE WITH HIM ON THAT ONE, I THINK IT'S DEFINITELY TAKEN TOWARDS ROCK.

D.F. WHO INFLUENCES YOU.

B: ROCK.

M: ALL THE EARLY BRITISH GROUPS, LIKE THE KINKS, THE BEATLES, THE EARLIER GROUPS LIKE LED ZEPPELIN, CREAM, AND SABBATH, FOR ME AT LEAST, THE 70S POP, SINGER SONGWRITER STUFF.

D.F. WHO WOULD YOU LIKE TO TOUR WITH.

B: MARILYN MANSON, HANSON, I'M REALLY INTO FIFTEEN YEAR OLD GIRLS, THEY'RE HOT

D.F. HOW DO YOU LIKE PLAYING IN OTHER CITIES.

B: I LOVE IT

M: WE'VE ONLY DONE IT TWICE

D.F. DO YOU GET A REALLY GOOD RESPONSE FROM THE OUT OF TOWN SHOWS

B: NO

M: WE DID IN CINCINNATI, THAT WAS BECAUSE THEY WERE ALL FROM LOUISVILLE

D.F. WHO ARE SOME OF YOUR FAVORITE BANDS IN LOU.

B: I LIKE THEM ALL.

M: THEY'RE ALL GOOD.

J: YEAH.

SO THAT'S THE STORY ON 'THE LOVED', MAKE SURE IF YOU GET A CHANCE IN THE FUTURE TO CHECK THEM OUT, AND KEEP AN EYE OUT FOR THE RELEASE OF THEIR FIRST RECORD .

## RESPECT

IT SEEMS THAT AS OF RECENTLY EVERY TIME I GO TO A SHOW I END UP COMING HOME ENTIRELY PISSED OFF. NOW THIS REALLY BOTHERS ME, BECAUSE

A.) I KNOW I'M NOT ALONE

B.) I DON'T EVER REMEMBER THINGS BEING THIS WAY.

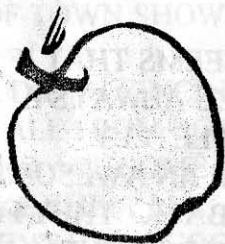
C.) I REALLY LOVE LOUISVILLE MUSIC SCENE.

THE LAST YEAR OR TWO IN LOUISVILLE HAVE REALLY SHOWN SOME INTERESTING VARIETIES IN MUSIC. I REALLY LIKE THE HARD-CORE/PUNKROCK SOUND OF A LOT OF THE BANDS AROUND HERE, BUT SOME OF THE MORE INVENTIVE STYLES OF MUSIC THAT HAVE STARTED POPPING UP HAVE REALLY CAUGHT MY EYE. I'M TALKING ABOUT BANDS LIKE MONTH OF SUNDAYS, ELLIOT, AND DIRT ONE, AMONG OTHERS. THESE BANDS ARE JUST PLAYING THE KIND OF MUSIC THEY LIKE, AND WORK DAMN HARD JUST LIKE THE OTHER BANDS AROUND HERE.

AT ALL THE SHOWS I GO TO IT SEEMS THAT IF CERTAIN BANDS ARE PLAYING, THERE'S ALWAYS A GROUP OF BRAINLESS ZOMBIE'S, COMPLETELY INCAPABLE OF SHOWING RESPECT FOR AN AWESOME BAND, LURKING SOMEWHERE IN THE BACK. THEY FEEL THE NEED TO YELL AT THE BAND AND BOO THEM. NOW THIS PISSES ME OFF, NOT ONLY BECAUSE I REALLY LIKE THE BANDS, BUT ALSO BECAUSE EVEN IF I DIDN'T CARE FOR THE BAND, I WOULD AT LEAST UNDERSTAND THE FACT THAT THEY WERE WORKING INCREDIBLY HARD. THIS THEREFORE WOULD MAKE ME HAVE ENOUGH RESPECT TO KEEP MY THOUGHT'S TO MYSELF. BUT WHEN I THINK ABOUT IT, I'M NOT EVEN SURE IF IT'S THE FACT THAT THEY DON'T LIKE THE BAND BECAUSE I'VE

SEEN THE "ZOMBIES" AIMING THEIR COMMENTS AT ZINES, AND EVEN RECORD LABELS THAT HAPPEN TO BE HERE. MY THEORY ON THE MATTER IS THAT THERE ARE JUST SOME PEOPLE WHO ARE TOO WEAK TO GET UP AND DO ANYTHING, AND ARE JEALOUS OF THE PEOPLE WHO DO. I'M NOT SURE IF THEIR BEHAVIORS ARE AN ATTEMPT TO DO SOMETHING, BUT IF THEY ARE, ALL I CAN SAY IS, YOU'RE GOING ABOUT IT ALL WRONG. YOU'LL GAIN MORE RESPECT, BY SHOWING RESPECT FOR OTHERS.

# APPLE ANNIE'S MARKET NATURAL FOODS



5120 DIXIE HWY.

FULL SELECTION OF NATURAL FOODS

& SUPPLEMENTS.

HOURS: M-F 10-7

SAT. 10-6 & SUN. 1-5

PHONE: 449-4620

## WHIPPYSMOOTH

THE TOP SMOOTHEST THINGS OF THIS MONTH

1. FOX FLICKS AT VILLAGE 8
2. JENNIFER PARIS AND ERIC SEIBERT'S 18TH B-DAY'S
3. TRIVIAL PURSUIT
4. THE CARTOON NETWORK

SOME SITES TO CHECK OUT FOR YOUR ENJOYMENT

SNOIT : <http://www.geocities.com/sunsetstrip/club/5406>

NOISE POLLUTION : <http://www.win.net/noise/pollution.html>

DON'T FORGET TO E-MAIL THE DRAGONFLY WITH ALL  
YOUR THOUGHTS AND COMMENTS AT OUR NEW

ADDRESS:

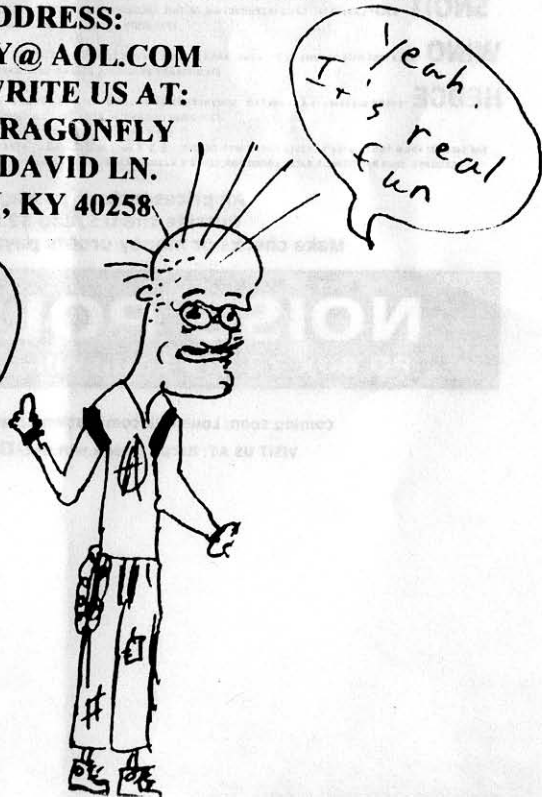
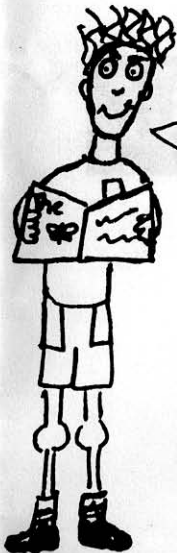
WHIPPY@AOL.COM

AND WRITE US AT:

C/O DRAGONFLY

5530 DAVID LN.

LOU, KY 40258



# IF THIS IS WRONG, WE DON'T WANT TO BE RIGHT.

**UNION** THE DEBUT EP FROM ONE OF LOUISVILLE'S HARDEST BANDS. THREE BRUTAL HARDCORE ANTHEMS FEATURING "13", "BASEMENT", "HAMMER AND SICKLE". LIMITED TO 500 COPIES. 3-SONG 7" EP \$3.00

**MONTH OF SUNDAYS** SOMETIMES LOUD AND AGGRESSIVE, SOMETIMES MELODIC AND QUIET. THESE BOYS DELIVER THE ROCK IN WAYS YOU'VE NEVER DREAMED. INSANE DYNAMICS AND BEAUTIFUL PACKAGING. 3-SONG LP \$7.00

**CONSPIRACY 8A** COMPILATION CASSETTE CONTAINS 17 SONGS BY THE LINES OF ELEVEN-ELEVEN, WINO, UNION, MONTH OF SUNDAYS, BLINDIVE, BLANCE AND MANY MORE. COMES WITH A 20 PAGE BOOKLET OF BAND INFO. CASSETTE \$6.00

**MONTH OF SUNDAYS** RELEASE IS A 7" EP CALLED "SCHOOLS OUT". THIS RECORD SHOWCASES EVERY BIT OF WHAT THESE BOYS HAVE TO OFFER. IT'S ON WHITE VINYL AND WAS RECORDED AT D&L FOR OPTIMAL SOUND QUALITY. 3-SONG 7" EP \$4.00

**BLINDIVE/GORDON'S IGUANA** SPLIT 7"  
BLINDIVE CLOCKS IN AT ABOUT 6 MINUTES WITH THEIR HARD, MELODIC EPIC "TOUCH OF EDEN" WHILE GORDON'S IGUANA BRINGS IN THE HEAVY GROOVES WITH THEIR NUMBER "SOFA" SPLIT 7" SINGLE \$3.50

**LATHER** "A MODEST PROPOSAL" IS ONE OF THE BEST RELEASES OF '93. THEY BLENDED HARDCORE WITH CATCHY MELODIES AND VOCAL HARMONIES TO CREATE ONE OF THE MOST WELL WRITTEN YET EXTREMELY UNDERAPPRECIATED RELEASES OF THE TIME. MEMBERS WENT ON TO FORM THE PENNIES AND FRONT PORCH CAMPAIN (SELF DESTRUCT) CD \$8.00

FOR ONLY \$9.50 YOU CAN OWN THE **LOUISVILLE SLUGGERS 2** COMPILATION 7". THIS RECORD CONTAINS ONE SONG EACH BY EVIL TWIN THEORY, DYNBU, ERCHINT, AND THE AUDITORY CLANG. ALL FOUR CUTS ABSOLUTELY ROCK, BUT THE AUDITORY CLANG'S "CAPSIZE" ALONE MAKES IT A MUST-HAVE. (SELF DESTRUCT) 7" \$3.50

**SOLUTION UNKNOWN** "ATKSOO" DISCOGRAPHY CD IS THE REAL DEAL. THIS IS HARDCORE FROM BACK WHEN KIDS WERE WEARING HIGH TOP POINTS INSTEAD OF ANKLES. THIS COMPREHENSIVE DISCOGRAPHY CONTAINS EVERY TRACK EVER RECORDED BY THIS LEGENDARY LOUISVILLE BAND. INCLUDES 34 TRACKS. (SELF DESTRUCT) CD \$10.00

LET'S TALK ABOUT **KINGHORSE**. THE "KINGHORSE" LP IS FULL OF THEIR BLEND OF TWISTED, SABBATH-INSPIRED HARDCORE. THIS RECORD CHANGED THE FACE OF THE LOUISVILLE SCENE UPON ITS RELEASE IN 1990. IT INCLUDES CLASSIC ANTHEMS "NO I STAND", "RAZOR", AND "GREATEST GIFT". NEXT IN LINE IS THE "GOING HOME/LOSE IT" 7" SINGLE. THE FIVE ADDITION TO THE KINGHORSE CATALOG CONTAINS TWO DEMO RECORDINGS OF SONGS THAT WERE TO BE ON THE SECOND ALBUM. FOR ANY FANATICS, THE LYRICS ARE ETCHED INTO THE BACK OF THE RECORD. LAST BUT NOT LEAST, WE HAVE THE "TOO FAR GONE" CD. IT COMPLETES MOST OF THE ROUGH DEMOS RECORDED BY THE HORSE FROM 1988 TO 1992. THIS COLLECTION ACCURATELY FOLLOWS THE BAND FROM THEIR HARDCORE-PUNK BEGINNINGS TO THEIR LATER MORE MELODIC EPICS. CONTAINS 19 TRACKS. JUST GO OFF... (CAROLINE) LP \$8.00 (SELF DESTRUCT) 7" SINGLE \$3.50. (SLAMMER) CD \$10.00

**FADING OUT** WERE A LEGENDARY AND INFLUENTIAL LOUISVILLE HARDCORE OUTFIT. THEY RECORDED AN ALBUMS WORTH OF MATERIAL IN 1985, BUT IT WASN'T OFFICIALLY RELEASED UNTIL 1998 BY PALACE RECORDS. MEMBERS WENT ON TO FORM KINGHORSE. (PALACE RECORDS) 10-SONG LP/CD \$9.00/\$10.00

THE TWO SONGS CONTAINED ON THE **ELLIOTT** "IN TRANSIT" 7" OFFER A QUICK GLIMPSE AT ONE OF LOUISVILLE'S HARDEST WORKING BANDS. POWERFUL, YET MELODIC. EXCELLENT VOCALS. SOON TO BE BIG STARS. (INITIAL) 7" \$3.50

**SNOIT** "HALF" CASSETTE. GOOD INTRODUCTION TO THIS UNCOMPROMISING, YOUNG BAND. SPEEDY HARDCORE TUNES FILLED WITH HATEFUL BANTS AND YOUTHFUL REBELLION. (FUE) 11-SONG CASSETTE \$5.00

**WINO** "GREATEST HITS VOLUME 2" 7" LOUD, ANGRY, NOISY. MUSIC THAT'S HOT FOR THE TIME. HEAVY, JARRING RHYTHMS THAT GRAB YOUR ATTENTION AND KEEP IT. (TEMPORARY RESIDENCE RECORD COMPANY) 2-SONG 7" \$3.50

**HEDGE** "EVERY BLESSING IS A CURSE" CD. SOUTHERN-FRIED FUGAZI FROM THIS YOUNG BAND THAT BROKE UP BEFORE THEIR TIME. 11 SONGS OF DRIVING GROOVES AND EXPLOSIVE DYNAMICS. GREAT PRODUCTION. (DAMN) CD \$9.00

THE FIRST 7" FROM TONY HOYLE'S LATEST FORAY INTO ODDITY. **THE WEB**. STRANGE, VERY STRANGE. THE BAND LOCKS ONTO THEIR OFTEN INCONCEIVABLE GROOVES, THUS PROVIDING A BACKGROUND FOR HOYLE'S VARIOUS BANTS AND DECLARATIONS. "AZUZA" B/W "THE HANDCUFF HOAX". (DAMN) 2-SONG 7" \$8.50

All prices include postage within U.S.  
Outside the U.S. add \$2.00 per item.  
Make checks or money orders payable to Noise Pollution.

## NOISE POLLUTION

PO Box 72189 Louisville, Kentucky 40272

coming soon: Louisville compilation CD and Erchint/Valence split 7"  
VISIT US AT: <http://www.win.net/noise/pollution>